

Instructions

Kit Number KBT40

Use with ID150 and CME686 or CME810 or EH222

Includes:

Cover, Stainless Steel	1
Ice Maker Lid Assembly	1
Gasket	8 feet
Label, Warning	1
Baffle	1
Screw, WG 8–32 12SS	2

1. Unpack kit.
2. Remove lid holder from the front of the ABS.
3. Remove sheet metal retainer screws (item 3 on Fig. 1) from top front of dispenser.
4. Remove plastic wrap from the icemaker lid adapter (item 2 of Fig. 1) and set icemaker lid adapter on the top of the dispenser.
5. Fasten the adapter onto the bin with the retainer screws removed in step 3.
6. Replace lid holder.
7. Seal the icemaker to the top of the dispenser as follows:
 - A. Refer to illustration figure 1A and place gasket tape on top of adapter where ice making head will be. Begin attaching gasket at the front, then attach the sides and finish with the center portion (C). Center section will cover up threaded holes, not needed.
 - B. Lift the ice machine and place it onto the gasket.
8. Remove the plastic wrap from the baffle (item 7 on Fig. 1). Place it onto the adapter by first sliding the back of the baffle under the front of the adapter and then line up the thumbscrews with the socket latches (refer to Fig. 3). Turn the thumbscrews to lock them into place. The locked position for the thumbscrews should have the wings in line on each side (refer to Fig. 4).
9. Follow the ice maker manufacturer's instruction to complete the installation of the icemaker.

620201022

10. Remove the plastic wrap from the manual fill front cover (item 1 on Fig. 1) and put it over the front of the ice bin.

11. Put the warning label (item 5) on the front of the cover (refer to Fig. 1).

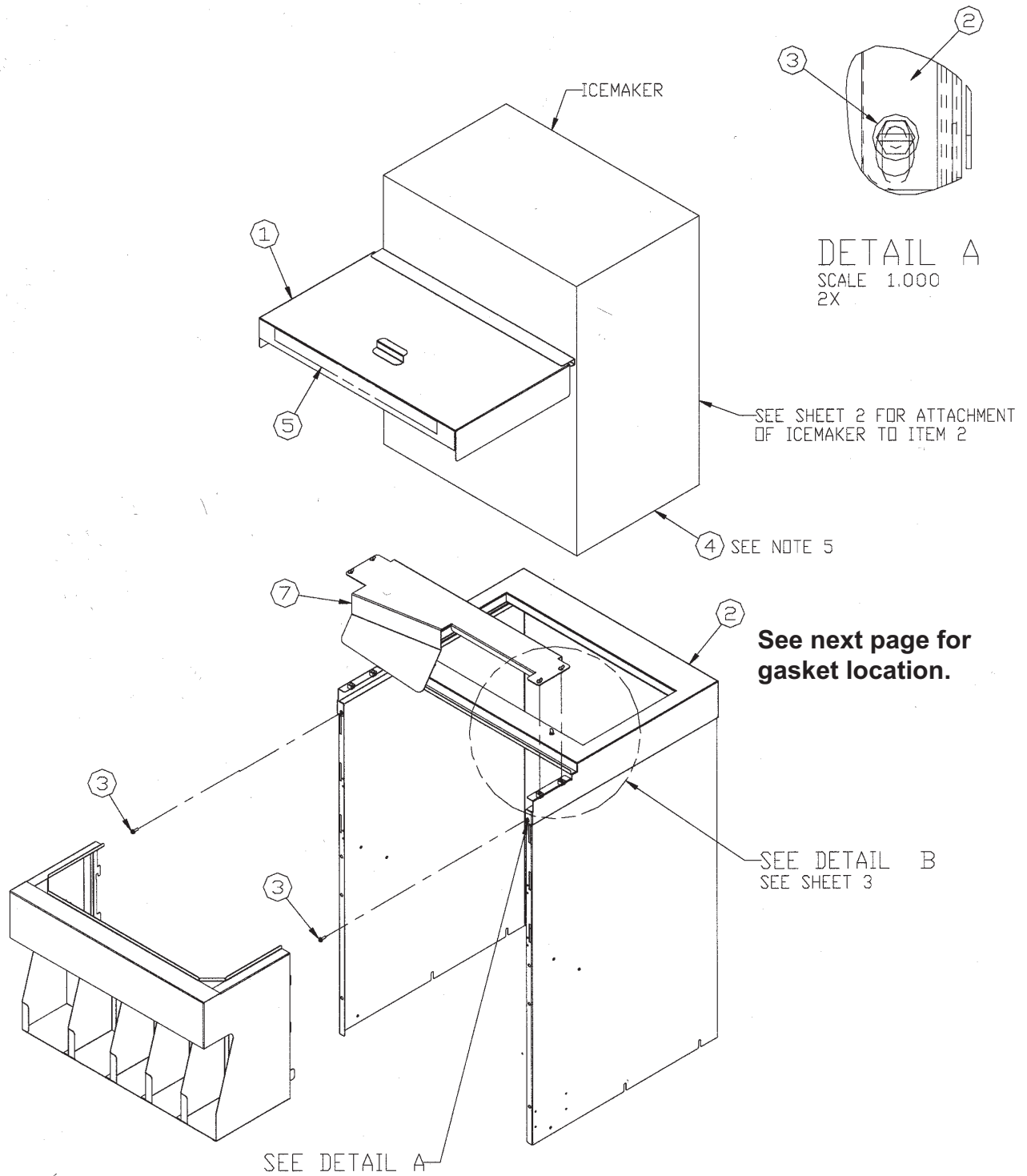


FIG. 1.

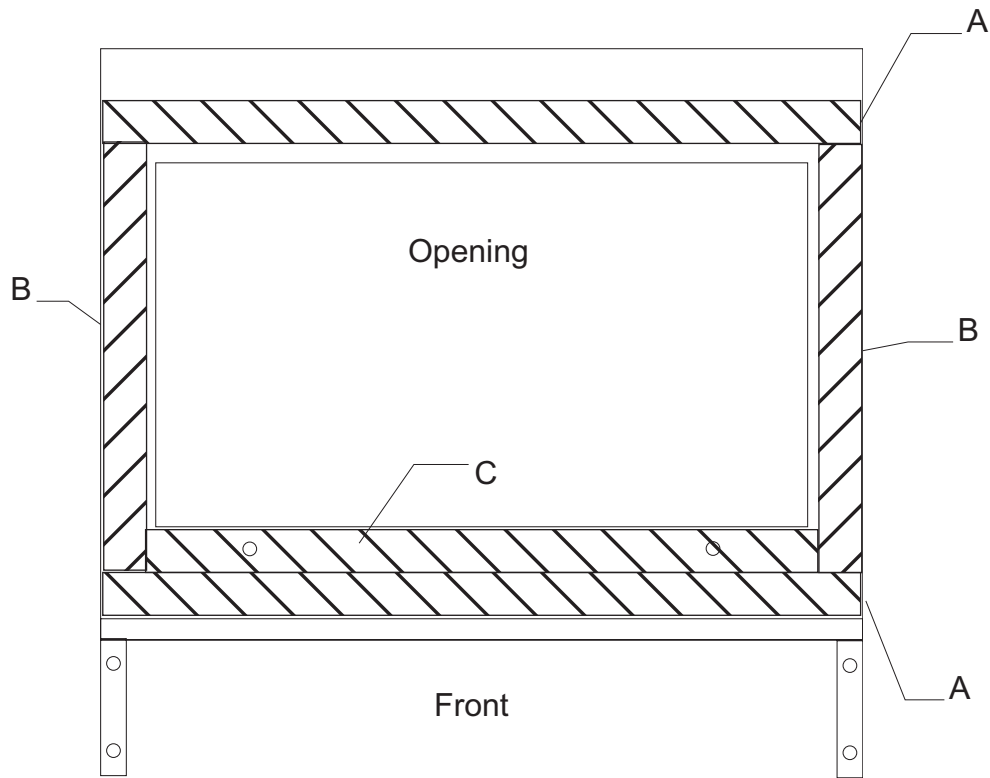
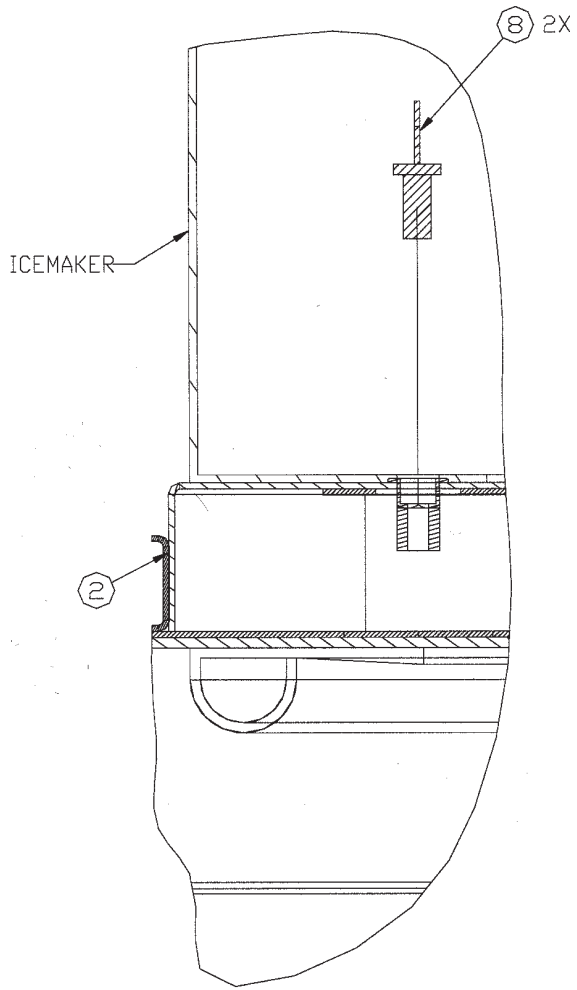


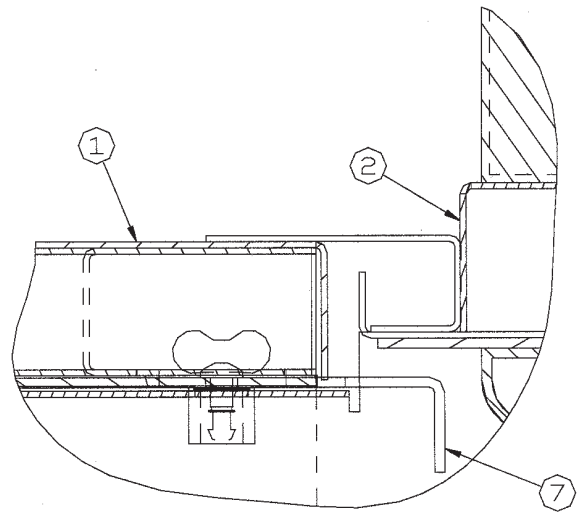
Figure 1A - Gasket Locations

Gasket Lengths		
Location Code	Use At	Cut to Length
A - need 2	Front or Back	22 1/8"
B - need 2	Sides	12 1/2"
C - need 1	Center Front	19 5/8"



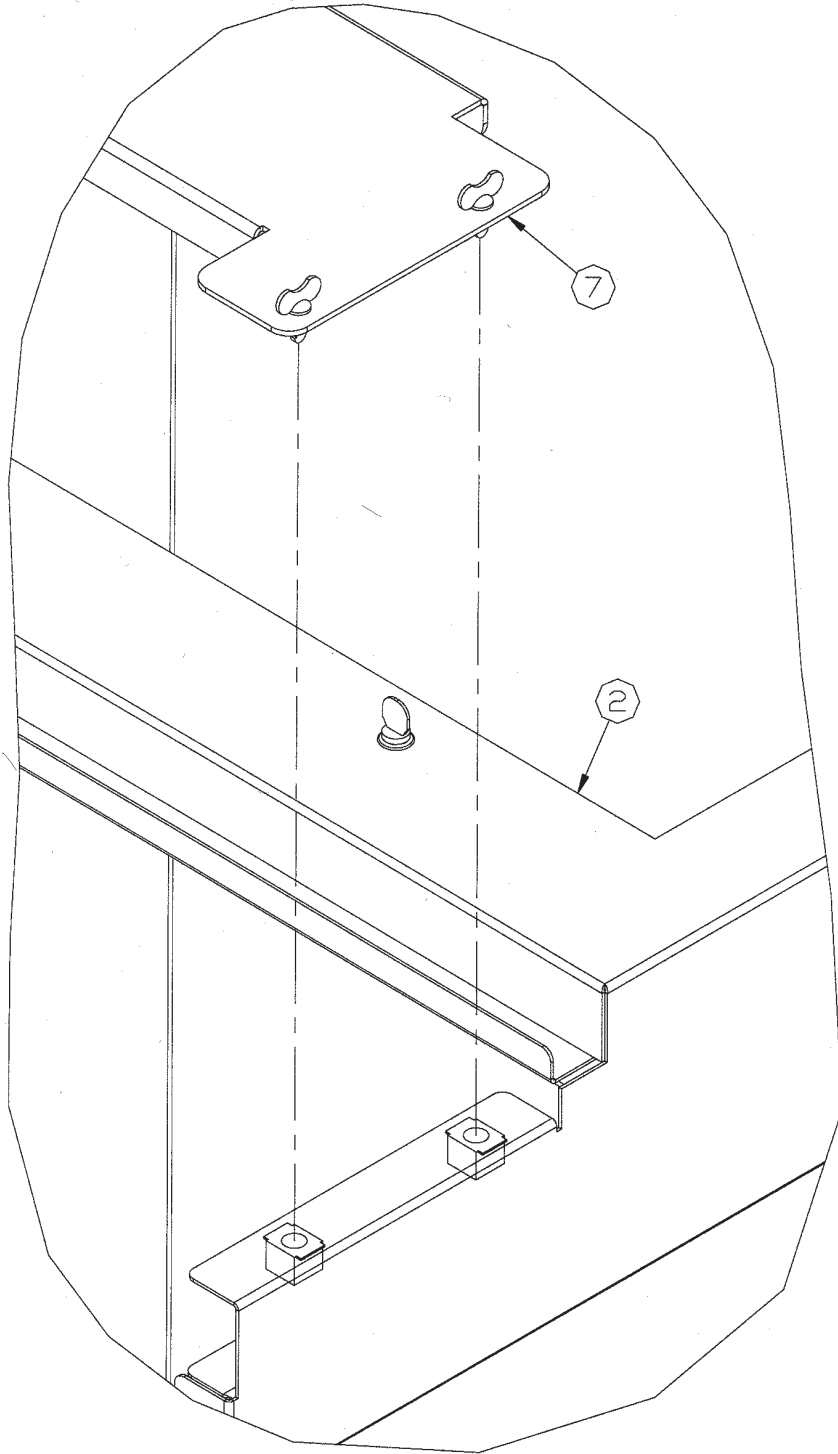
SECTION W-W

FIG. 2.



SECTION Y-Y

FIG. 3.



DETAIL B
SCALE 0.500

FIG. 4.