

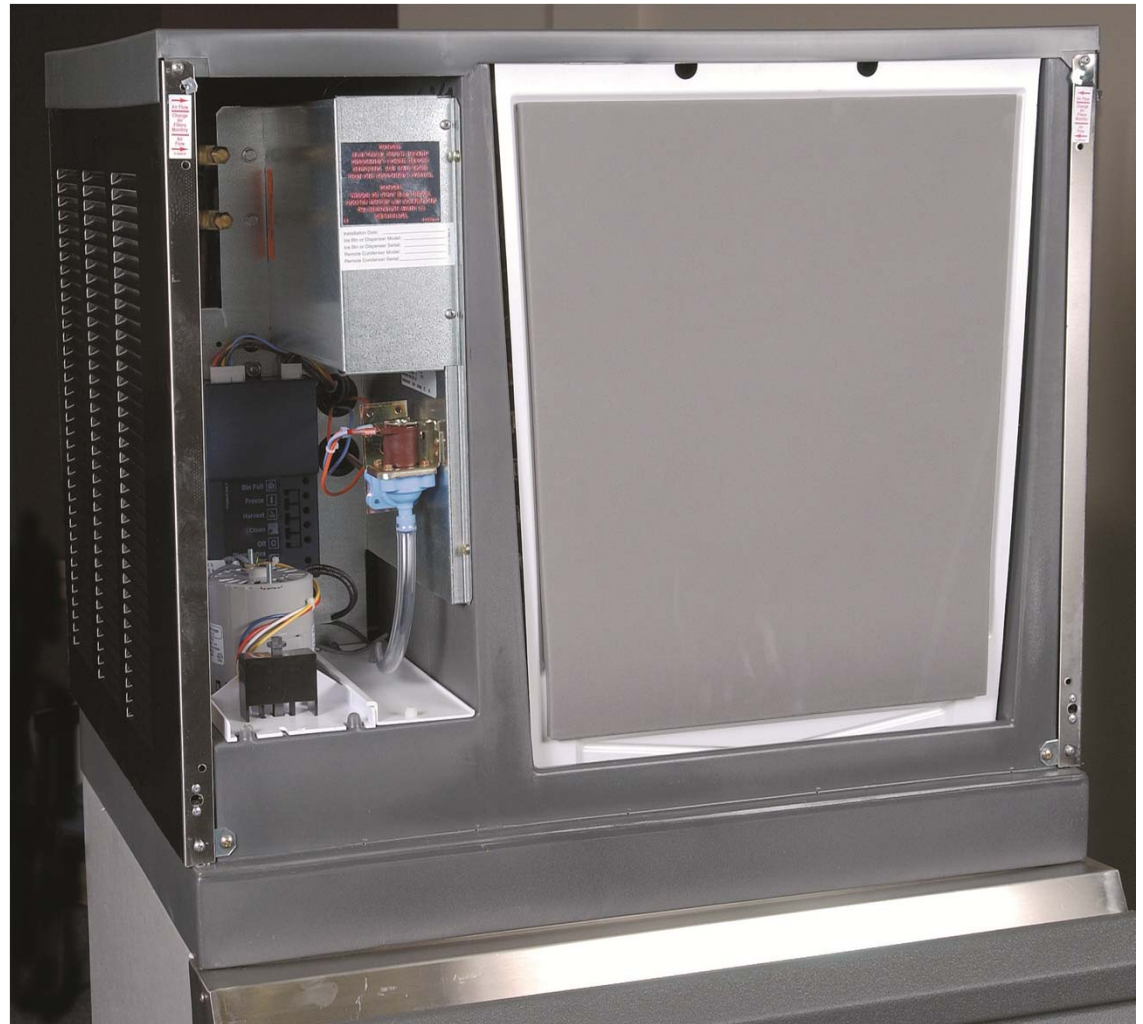


CM³ Photo-Eye Ice Sensor

Removal and Cleaning

Removal

- Remove Front Panel
- Harvest any ice
- Shut unit off



Removal

- Remove Evaporator Cover



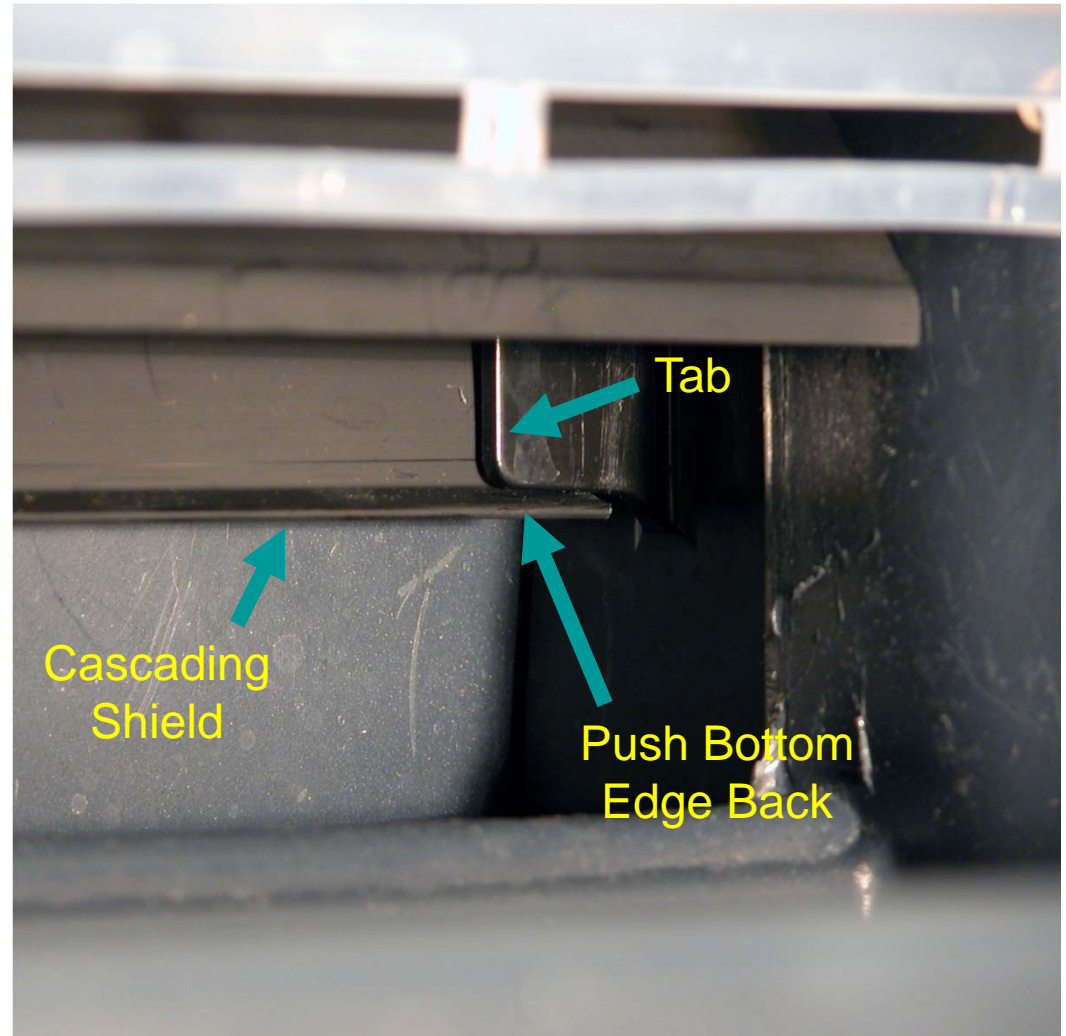
Removal

- Pull Cube Deflector Out From Under Evaporators



Removal Cascading Shield

- Locate Cascading Shield
- Push Bottom of Shield Back to Release From Tabs on Eye Holders



Remove Cascading Shield

- Lift the shield off the eye-holder tabs. Then pull forward and down, out from under the evaporators.



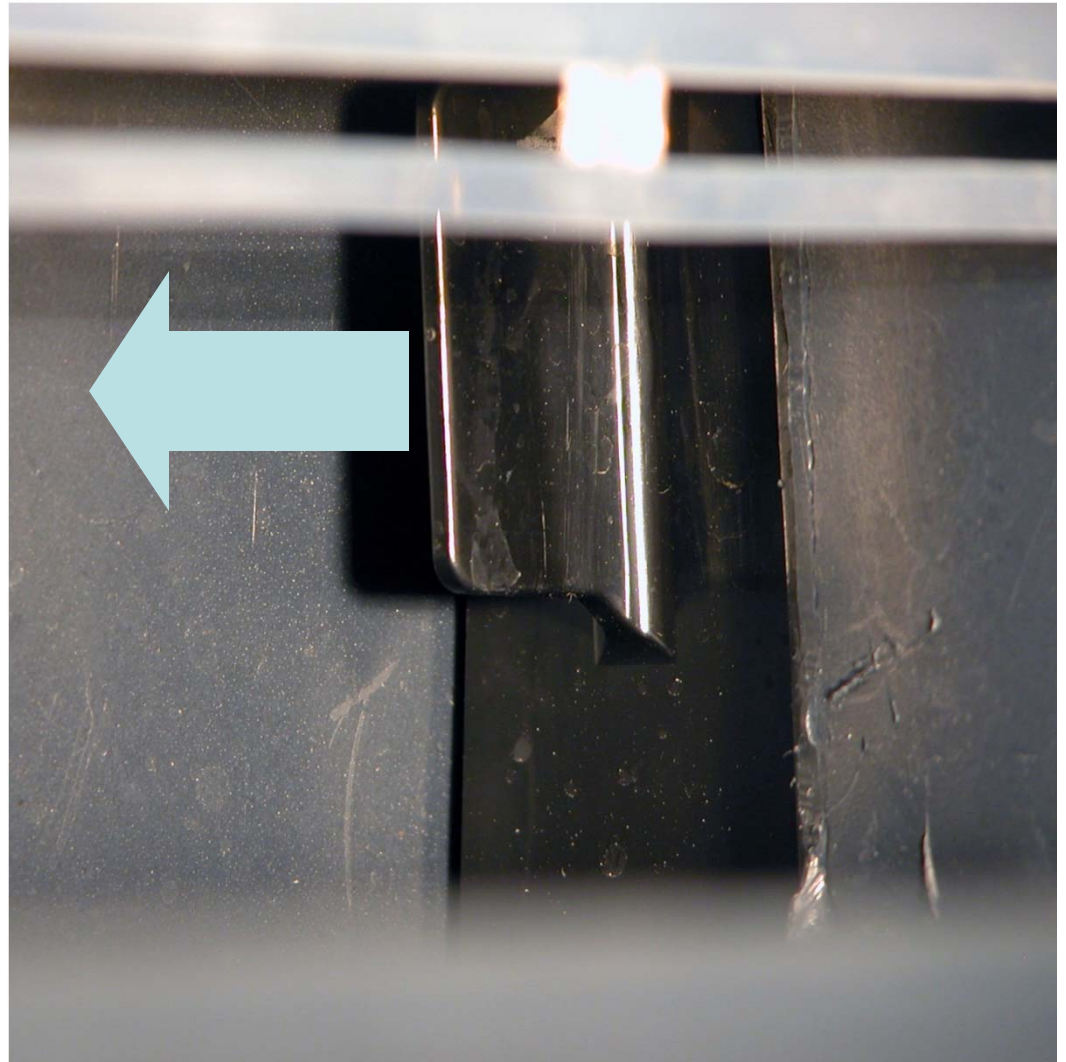
Un-Bundle Wires

- Photo-eye wires may be bundled together. Unbundle them to get slack so the eyes can be removed.



Remove Eye-Holders

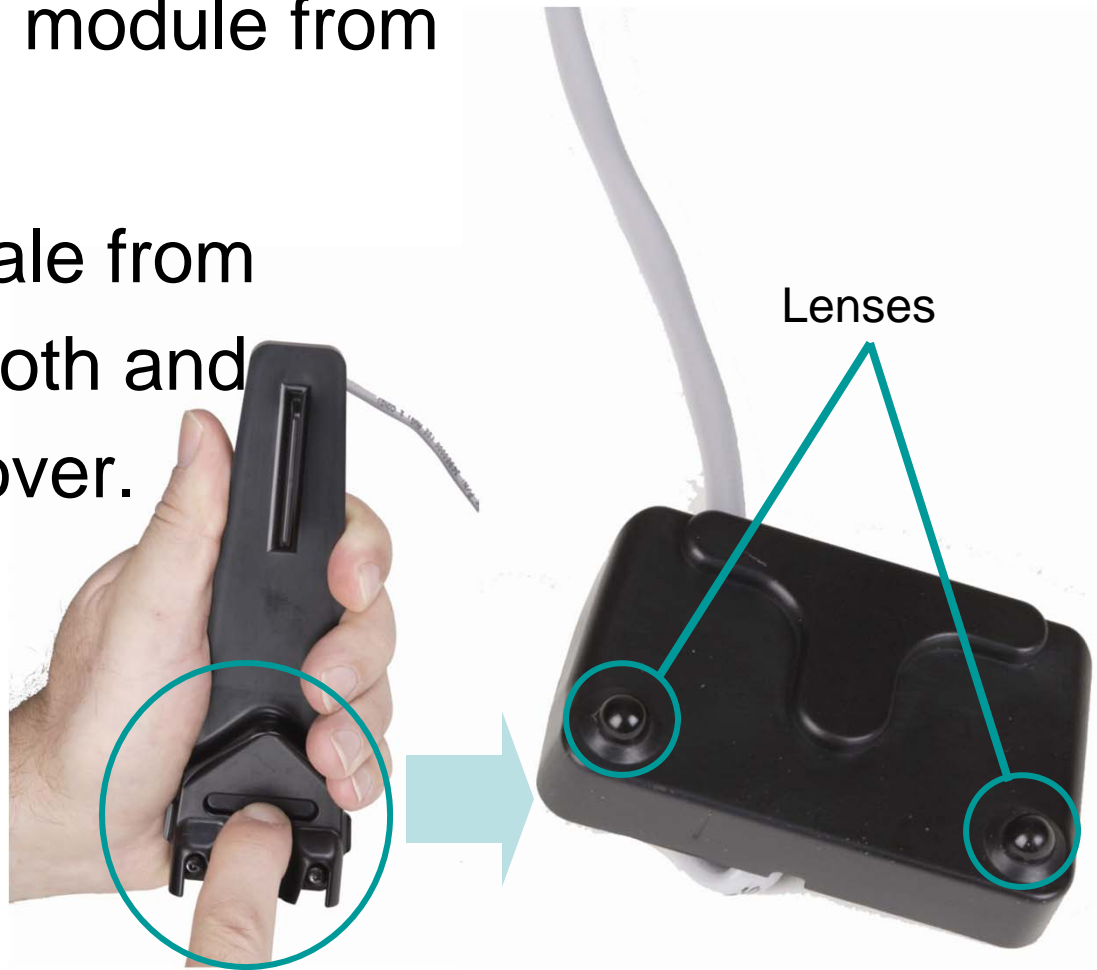
- Pull the holders out of the left and right walls by pulling on the tabs.



Clean the Photo-Eyes

- Push in to release module from holder
- Gently remove scale from lenses, use soft cloth and diluted scale remover.

Note: Prior design did not have separate module.



Reassembly

- Snap module back into holder
- Be sure wire is clipped as shown
- Insert holders into wall of freezing compartment
- Place cascading shield onto holder
- Snap onto tabs



Reassembly

- Note how cascading shield snaps onto eye holder tab

