

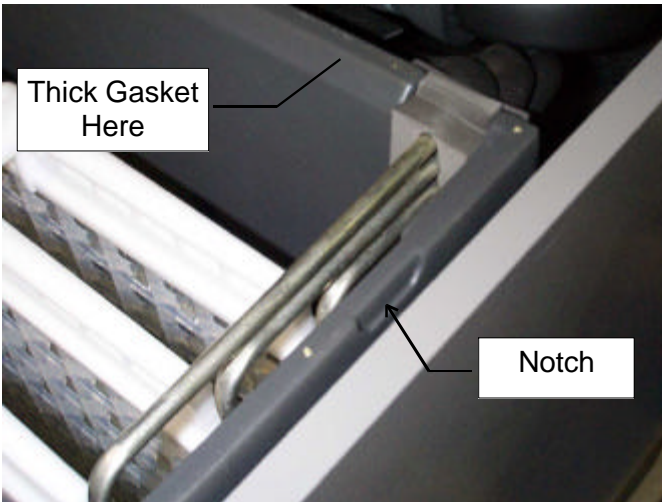


Instructions

Stacking

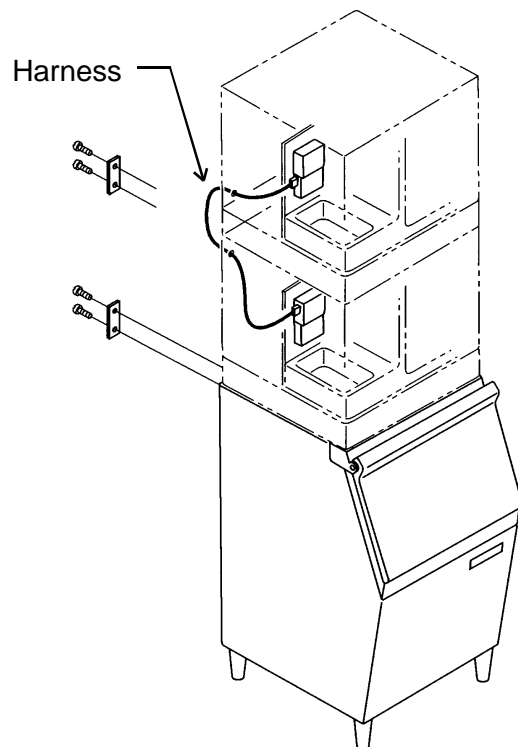
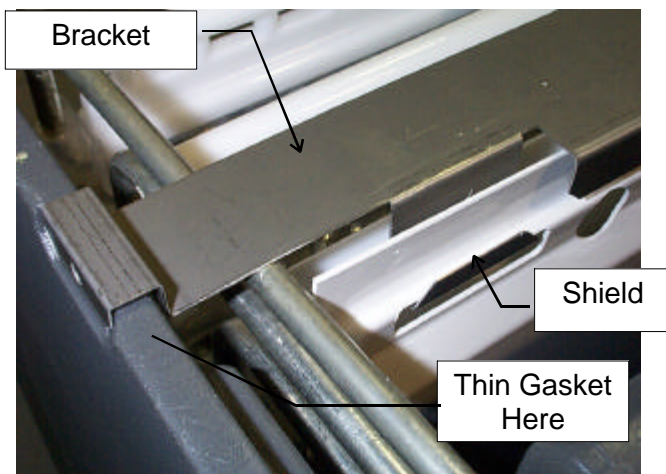
Only like models may be stacked. Begin after the bottom unit has been placed on the ice storage bin and secured. Stacking requires heavy duty leg kits. Casters are NOT recommended.

Bottom Machine:



1. Remove front, side, and top panels.
2. Remove the cascading shield from the lower unit.
3. Hang the plastic shield from the tabs on the stainless steel bracket.
4. Locate the two notches on the sides of the top edge of the freezing compartment.
5. Place the bracket over the notches of the freezing compartment.
6. Secure bracket to freezing compartment with screws from the kit (from the sides).

7. Locate gasket material in kit. Place a layer of gasket material on the top edge of the plastic freezing compartment - thinner gasket on sides.



8. Place the top ice machine onto the bottom one. Secure together with hardware from the top machine. Remove front and left side panels.

Upper Machine:

9. Knock out 1 hole in the lower left (viewed from the front) corner of the upper unit's back panel.

Lower Unit:

10. Knock out 1 hole in the upper left (viewed from the front) corner of the lower unit's back panel.

11. Position the strain reliefs over the wrapped portion of the stacking kit wire harness.

12. Route the Stacking Kit wire harness from the back to the top and bottom machines thru the holes made in steps 8 and 9.

- The harness is marked which end goes to which machine.
- Push the strain reliefs into place from the back of the machines.
- Follow local codes for 24 volt wire

13. Locate the bin thermostat on the metal bracket just above the controller.

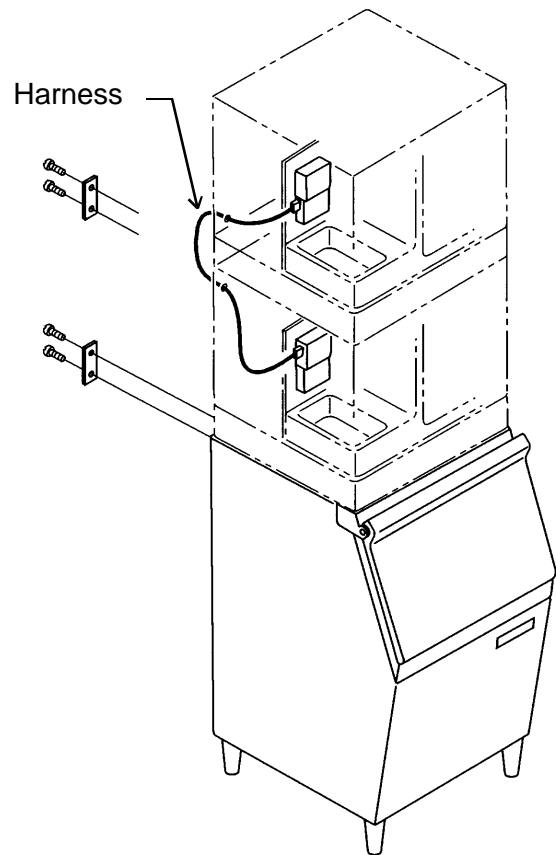
14. Route wire harness in lower ice machine to the controller. Connect to terminal #7. Plug the two free wires onto thermostat terminals #1 and #2

Top Machine:

15. Route the wire to the controller. Connect to terminal 7.

Bottom Machine

16. Route the bulb of the thermostat thru the base of the unit into the bin.



Route
Thermostat



17. Mount the bulb of the thermostat to the bracket from the kit.
18. Install the bin thermostat bracket onto the bottom of the machine.
19. Pull back excess cap tube and coil up in the machine.

20. Connect wires from harness to thermostat terminals.

21. Remove trim strip from top end of lower unit's front panel. Plug holes in panel with plugs from the kit.

Both Machines:

22. Return all panels and covers to their normal positions.

23. Complete the balance of the installation.

