

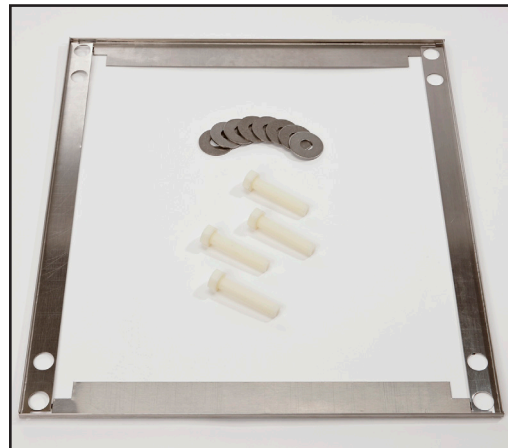
Instructions

Installing Floor Mounting Kits - 15 and 20 inch

The purpose of these kits is to be able to install the ice machine without legs. Most code requires sealing to the floor if no legs are used. Four bolts support the machine while trim strips at the edges provide material for sealant to form onto.

The kits include:

- Four plastic bolts - to act as glides & fasteners
- Eight washers - as shims to adjust machine height
- Two front to back sheet metal trim strips with double sided tape
- Two side to side trim strips with double sided tape
- One tube of sealant.



1. Tip the machine on its back.
2. Attach the front to back trim strips to the bottom of the machine by removing the covering over the tape on the strips and placing them onto the ice machine base. They will slip over the rubber bumpers attached to the base. Note: Flanges point away from machine base.
3. Attach the side to side trim strips to the bottom of the machine by removing the covering over the tape on the strips and placing them onto the outside edges of the base.
4. Install the four plastic 5/8-11 bolts. Use 1 or 2 washers as shims. The washers also overlap and help secure the trim strips. The head of the bolt must extend below the bottom edge of the trim strip.

Note that the machine must be level when in operation and the shims may be used to compensate for irregularities in the floor.

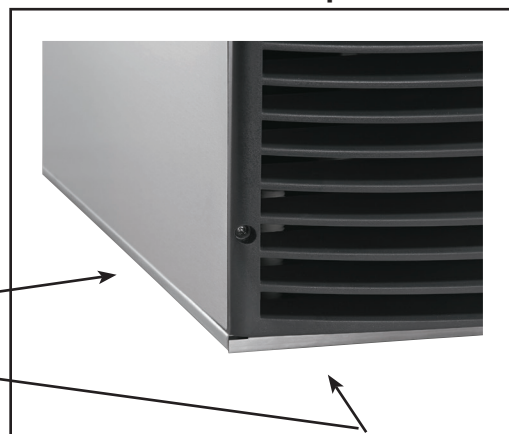
15 inch models: The left rear bolt must be shortened about one inch to avoid contact with the drain fitting.

5. Return the machine to an upright position and complete the installation.

Note: Do not start the machine for at least an hour to allow oil to return to the compressor.

6. Place the machine in its final location and seal the edges of the exposed trim strips to the floor using the sealant provided.

Edge of Trim Strip



17-3474-01

Last revised 12/13