

Automatic Harvest Time Adjustment Kit


Kit Contents: Metal box containing relay and thermostat; bulb mounting straps; insulation; wire ties.

Kit Concept: Addition of a thermostat that senses accumulator inlet temperature. When the unit is in a harvest cycle, **and** when the suction line temperature is low, the thermostat keeps the machine in the harvest cycle until the accumulator inlet temperature increases to the thermostat's set point. This allows the timer's harvest time to be the minimum harvest time and the thermostat to control the maximum harvest time.

If conditions, such as cold water, extend the amount of time needed to release all the ice (and warm up the suction line) the thermostat will keep the machine in harvest after the timer's harvest time has expired.

Tools Required: Phillips screwdriver, regular screwdriver, knife, drill, 1/8" drill bit

1. Disconnect electrical power.

⚠ WARNING	Electrical Shock Hazard Disconnect Electrical Power Before Beginning
	



2. Remove the front panels.

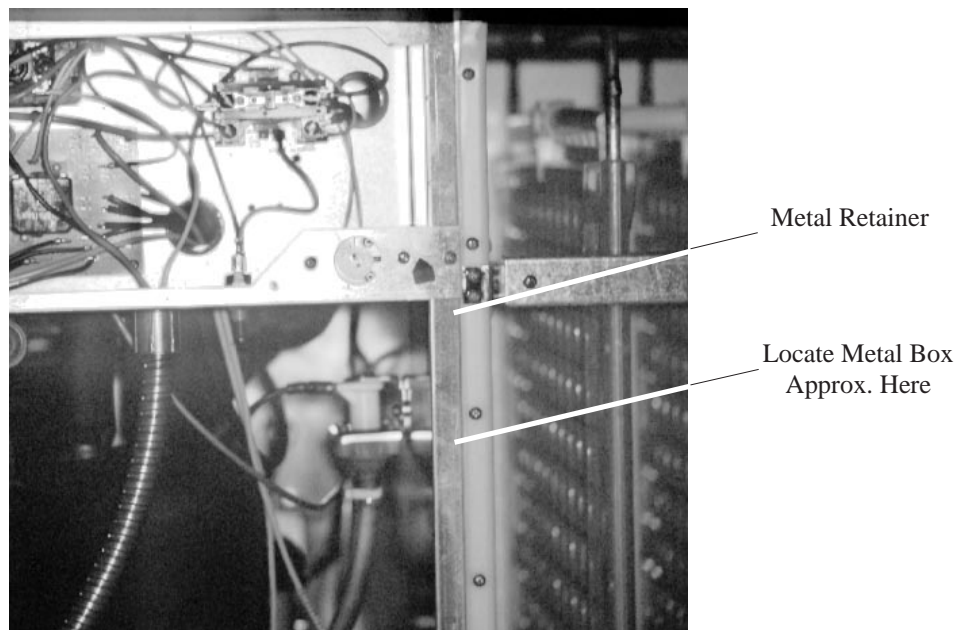
3. Remove control box cover.

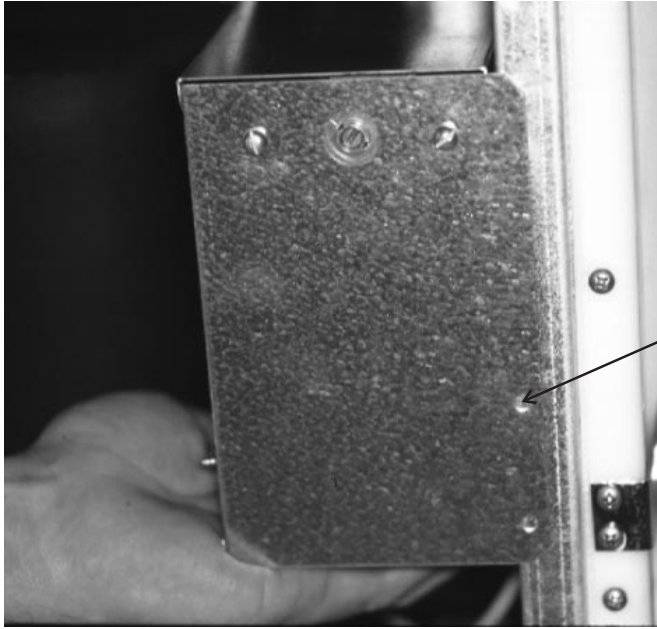
4. Remove cover from metal box. Uncoil the thermostat capillary tube and route it thru the small hole in the back of the box. Be sure the snap bushing is properly mounted in the hole when you are done.

5. Route the wires thru the big hole in the back of the metal box.

6. Return the cover to the metal box, secure it with the original screws.

7. Position the box on the sheet metal retainer that separates the freezing compartment from the rest of the unit.



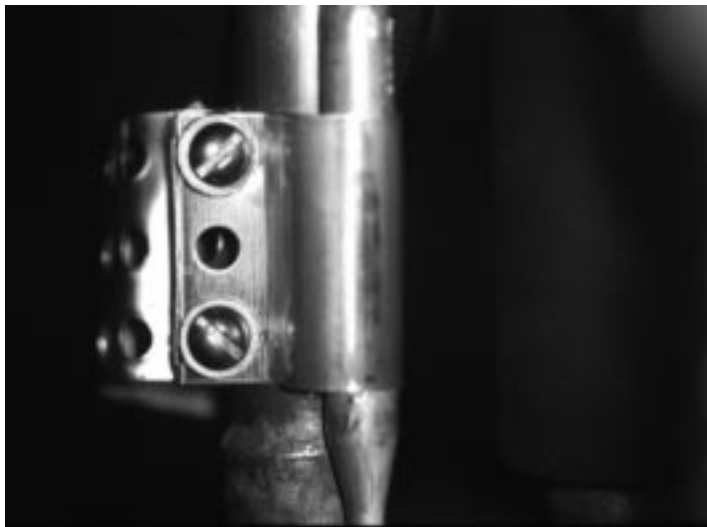
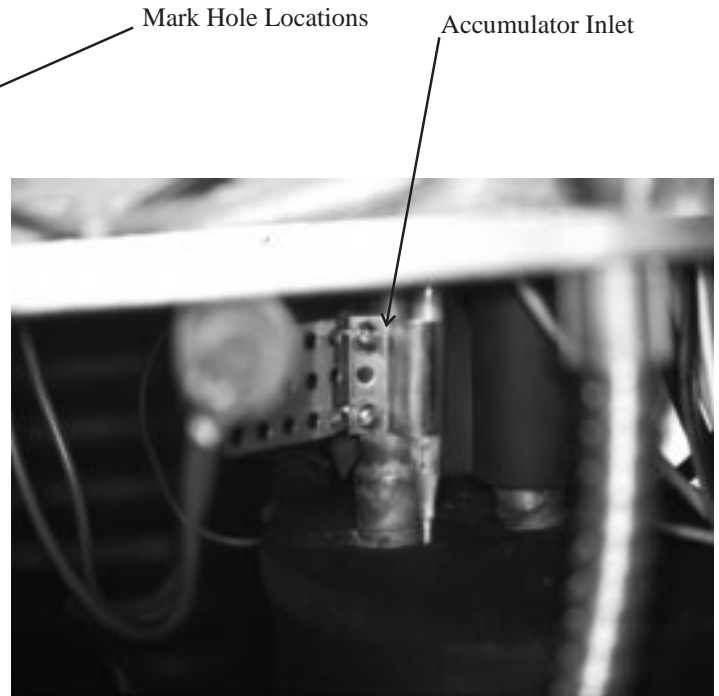


8. Use the holes in the flange of the box as a template and mark the location for two holes.

9. Drill two 1/8 " holes at the spots marked in the prior step.

10. Mount the metal box to the ice machine using two screws from the kit.

11. Slit and move the insulation covering the accumulator **inlet** line up about 6".



12. Attach the thermostat bulb to the accumulator inlet tube with the bulb mounting strap from the kit. Be sure that the mounting screws are on the side opposite that of the bulb.

13. Wrap the thermostat bulb with insulation, be sure that the bulb, clamp and inlet tube are completely covered.

14. Secure the insulation in place with 3 wire ties.

15. Route wires from metal box into the back of the control box.

16. Attach the white wire to terminal C4 on the main circuit board.

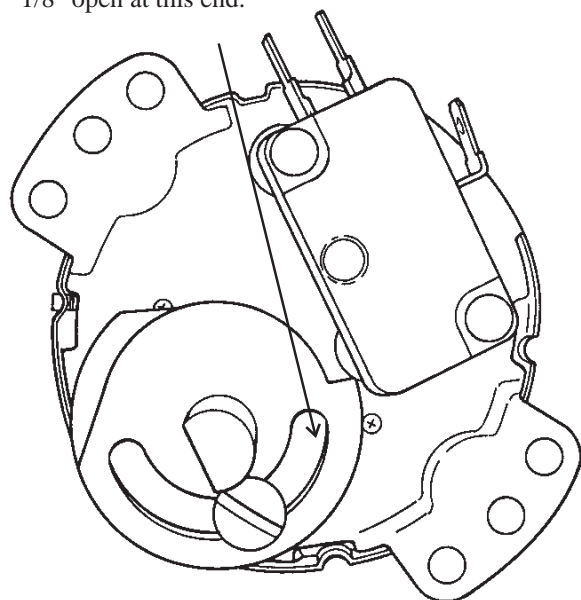
17. Attach the red wire to terminal C1 on the main circuit board.

18. Attach the violet wire to terminal C4 on the main circuit board.

19. Attach the black wire to terminal C3 on the main circuit board.

20. Loosen the screw holding the timer cams together. Adjust the cams so the end of the slot is about 1/8" open. Retighten the screws.

Make this slot about
1/8" open at this end.

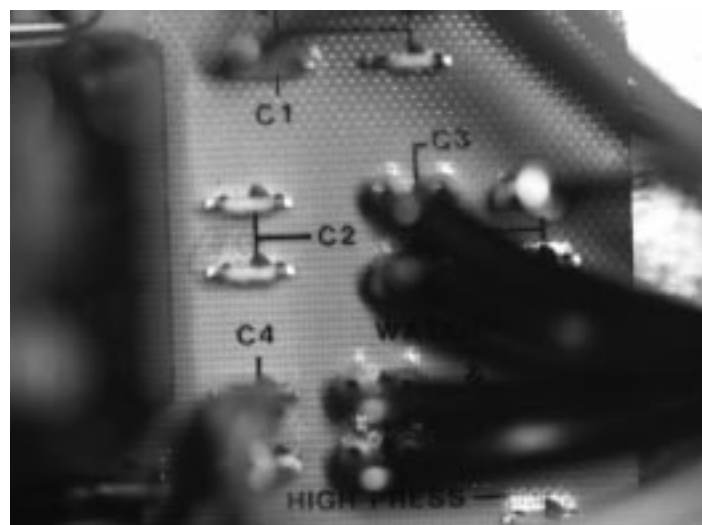
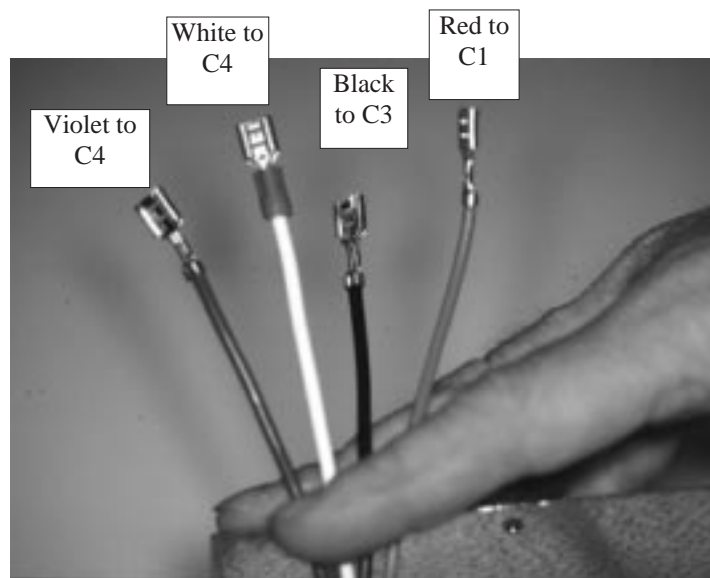


21. Start the machine, and reset the cube size per the instructions on the machine or in the manual. Check how long the timer rotates in the harvest cycle. It should be about 3 1/2 minutes. Adjust the gap between the timer cams until it is, and double check the cube size.

22. Return the control box cover to its original position and secure with the original screws.

23. Return the front panels to their original positions.

Note: Do NOT adjust the kit's thermostat.



Main Circuit Board