



# Instructions

## for the installation of the KSTAT-MD kit

used when connecting a CME1056 ice machine to the Lancer® 30" wide ice & beverage dispenser (series 4500, #85-4548H- or 85-4541H-)

**Function: Bin thermostat mounting and cabinet attachment.**

1. Remove lid and upper front from IBD30 dispenser.



2. Place ice machine on top of the dispenser.

3. Remove front and left side panels from the ice machine.

4. Push ice machine forward on the top of the dispenser.

5. Locate bin thermostat bulb. Remove cable tie and route bulb through base into dispenser hopper.

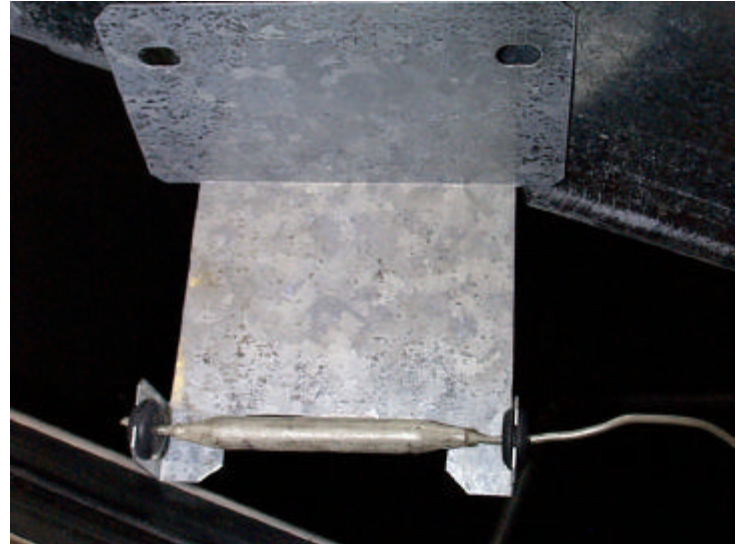


**Ice Machine on Dispenser**



Routing Hole

6. Find the new thermostat bracket (from the kit). Route bulb into bracket. Do NOT use plastic bracket that shipped with the ice machine.



**7. Check that Grommets “Lock” Bin Thermostat into Bracket**

8. From behind the machine, reach up with thermostat bracket and attach it to the bottom of the ice machine with the two three-pronged bolts shipped with the ice machine for bin thermostat bracket attachment.



9. Pull excess cap tube back into the ice machine's compartment.



10. Locate "Z" brackets from kit. Place on dispenser - note position in photo.

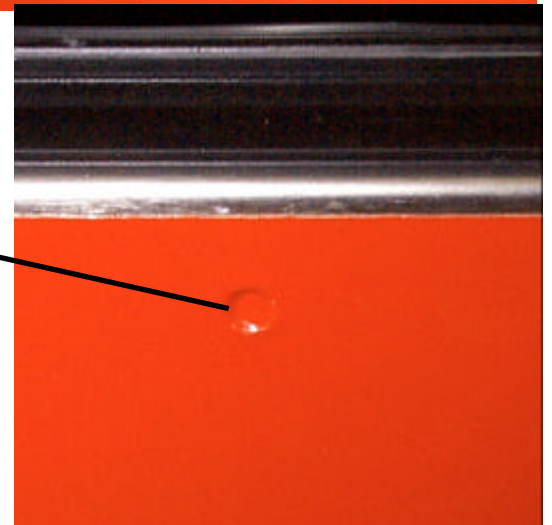
Secure Z brackets to the dispenser with two ¼ x 20 bolts from the kit.

"Z" Bracket



Note: The attachment holes on the dispenser are hidden behind the decal.

Dispenser Attachment Hole



Push ice machine all the way back until it rests against the "Z" brackets.

11. Attach the ice machine to the brackets with the bolts from the ice machine's hardware package.

12. Return all panels and covers to their original positions.

13. Complete the balance of the installation.

