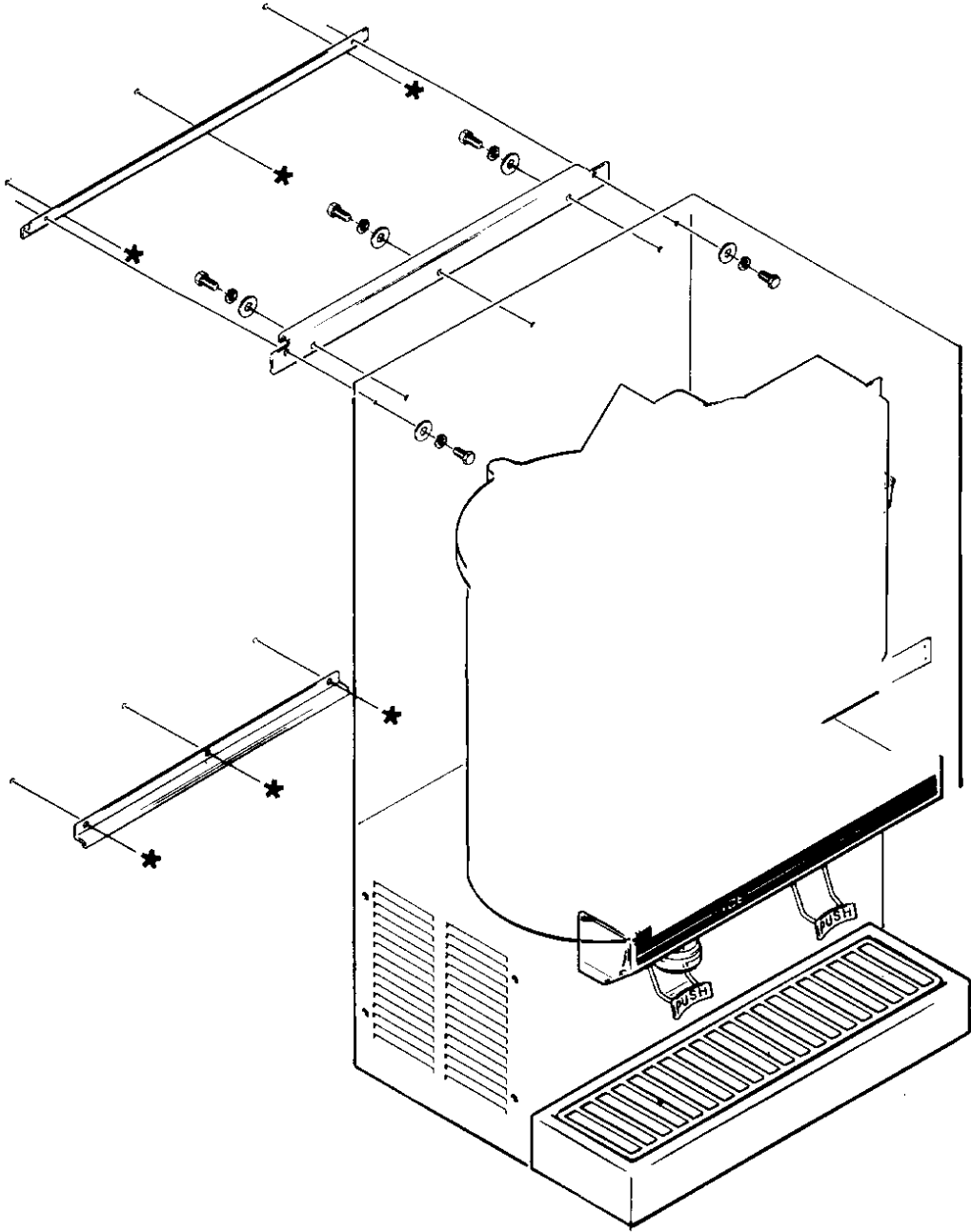




# INSTALLATION INSTRUCTIONS

## KWB3 WALL MOUNT KIT



## WARNING

We recommend the wall mounting installation be done by an experienced contractor. The weights to the machines when in use are over 350 lb. They should be mounted on a solid, rigid wall with proper fasteners for that type of wall and of adequate strength to support the weight of the machine during operation.

Clearance between wall and ice maker is a maximum of 1 inch.

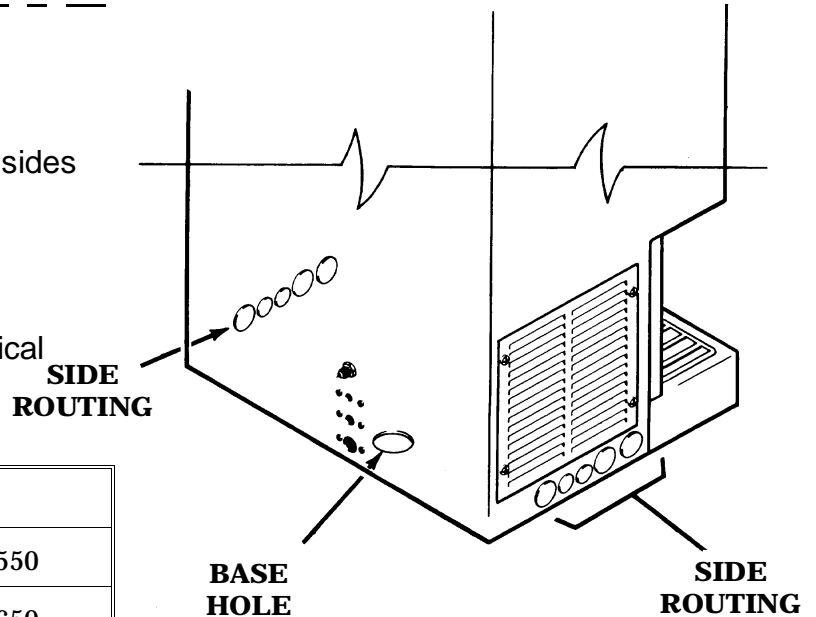
A 6" minimum clearance is required at both sides of ice maker for airflow (air cooled models).

Utility connection considerations include:

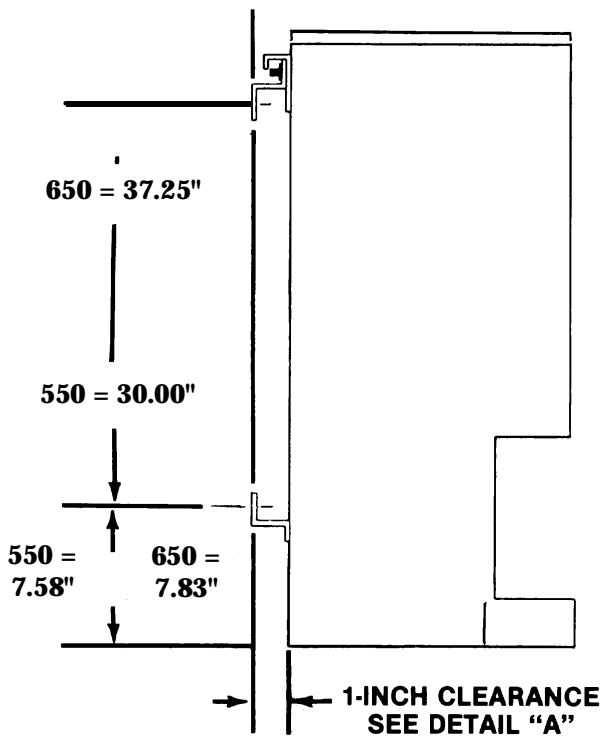
Removal of junction box.

Routing of plumbing connections and electrical source.

**DETAIL A  
BACK VIEW**



Drawing Ref.			
550 =	ND550	TDE550	NDE550
650 =	ND650	TDE650	NDE650



Utility connections may be made thru the base or at either side thru the pre-punched and plugged holes, using standard plumbing and electrical practices. See Detail A (above).

Interior plumbing lines must be disconnected from the original connections when routing utility connections thru the side or base of the ice machine.

1. Remove machine top. Attach bracket "A" to machine using (3) nuts, (3) flat washers, (3) lock washers and (3) 5/16 - 18 bolts received with kit.
2. Mount brackets "B" and "C" to the wall at the dimensions shown for the specific unit (hardware for this is not included).

USE FASTENERS AND WALL OF SUFFICIENT STRENGTH TO CARRY THE USE AND WEIGHT OF THE ICE MAKER.

3. Lift unit up and hook bracket "A" over bracket "B". Slide unit until the two remaining holes are aligned and secure with remaining (2) 1/4 - 20 bolts, (2) flat washers and (2) lock washers.

