

Scotsman®

FME2404 - 2400lb Flake Ice Machine

Modular Flake Ice Machine with *AutoSentry™*



Features and Benefits

- AutoSentry™ Monitoring System constantly checks workload on gearbox shutting down system before a problem develops preventing costly repairs.
- Electrical conductivity water sensor eliminates low or no water failures and cannot be affected by adverse water conditions.
- Plastic drain pan with larger outlet provides greater ability to quickly channel water away preventing particle build-up and rust.
- Rust and restriction free drain system features one-piece plastic drain tubes with larger ID for obstruction-free water flow.
- Durable, high grade stainless steel construction with massive, self-aligning spherical roller bearings; patented double-flight auger that evenly distributes the load; and heavy duty direct drive gearbox for high reliability and long life.
- Industry leading 3 year parts and labor warranty.



24 Hour Volume Production

Air Cooled

| | | |
|------------------------|--------------|------------------------|
| 70°F/21°C 50°F/10°C | Air Water | 90°F/32°C 70°F/21°C |
| 2455/1114 lb/kg | | 1800/816 lb/kg |



Modular Bin Options



B948S



BH1300BB
BH1300SS

| Model Number* | Dimensions W" x D" x H" | AHRI Certified Bin Capacity lb/kg | Finish | Ship Weight lb/kg |
|---------------|----------------------------|---|-----------------|----------------------|
| B842S | 42 x 34 x 44** | 778/353 | Stainless Steel | 185/84 |
| B948S | 48 x 34 x 44** | 700/319 | Stainless Steel | 220/100 |
| BH1100BB | 48 x 34 x 50** | 860/390 | SS w/GBB† | 280/127 |
| BH1100SS | 48 x 34 x 50** | 860/390 | Stainless Steel | 280/127 |
| BH1300BB | 60 x 34 x 50** | 1100/499 | SS w/GBB† | 310/140 |
| BH1300SS | 60 x 34 x 50** | 1100/499 | Stainless Steel | 310/140 |
| BH1600BB | 60 x 34 x 62** | 1755/796 | SS w/GBB† | 370/168 |
| BH1600SS | 60 x 34 x 62** | 1755/796 | Stainless Steel | 370/168 |

* See price list for Bin Top. ** Add 6" Height for bin legs.
† Stainless steel with galvanized back & bottom.



Flake Ice



Cools more quickly than other ice forms. Ideal for seafood and produce displays.



Certification



Warranty

- 3 years parts and labor on all components.
- 5 years parts on the compressor.
- Warranty valid in North, South & Central America for commercial installations.
- Contact factory for warranty in other regions.

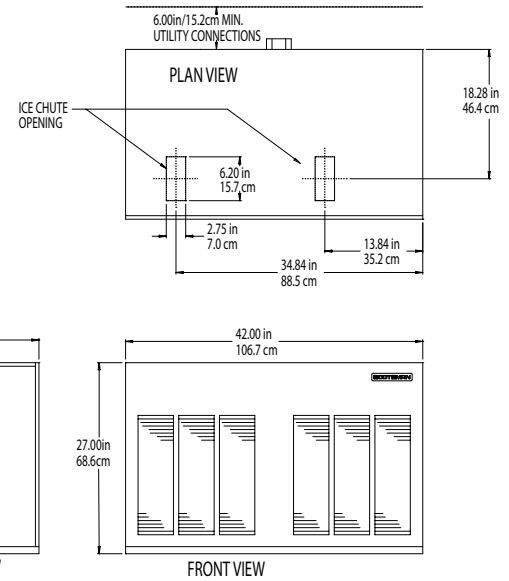
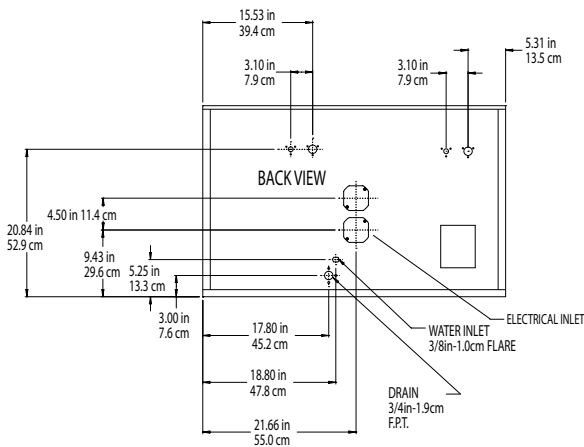
FME2404 - 2400lb Flake Ice Machine

Scotsman®

• 101 Corporate Woods Parkway, Vernon Hills, IL 60061 •
• 1-800-SCOTSMAN • Fax: 847-913-9844 • www.scotsman-ice.com • customer.relations@scotsman-ice.com •

FME2404 - 2400lb Flake Ice Machine

Modular Flake Ice Machine with *AutoSentry™*



Installation Note: On air cooled models, air enters through the front and exits out the back of the unit.

FME2404 - 2400lb Flake Ice Machine



Specifications

| Model Number | Condenser Unit | Basic Electrical Volts/Hz/Phase | Max. Fuse Size or HACR Circuit Breaker (amps) | Circuit Wires | Min. Circuit Ampacity | Energy Consumption kWh/100 lb (45.4 kg) 90°F(32°C)/70°F(21°C) | Water Usage Gallons/100 lb (liters/45.4 kg) | |
|--------------|----------------|---------------------------------|---|---------------|-----------------------|---|---|---------------------------------|
| | | | | | | | Potable | Condenser 90°F(32°C)/70°F(21°C) |
| FME2404AS-32 | Air | 208-230/60/1 | 25 | 2 | 20.6 | 3.26 | 12.0/45.5 | - |



All Models

Dimensions (W x D x H):

Unit: 42" x 24" x 27"
(106.7 x 61.0 x 68.6 cm)

Shipping Carton: 45.5" x 27.5" x 32"
(115.6 x 69.85 x 81.3 cm)

Shipping Weight: 425lb / 193kg

BTUs per hour: 15,800

Refrigerant: R-404A



Operating Requirements

| | Minimum | Maximum |
|--------------------|-------------------|------------------|
| Air Temperatures | 50°F (10°C) | 100°F (38°C) |
| Water Temperatures | 40°F (4.4°C) | 100°F (38°C) |
| Remote Cond. Temps | -20°F (-29°C) | 120°F (49°C) |
| Water Pressures | 20 PSIG (1.4 bar) | 120 PSIG (5 bar) |
| Electrical Voltage | -5% | +10% |

Specifications and design are subject to change without notice.

Scotsman recommends all ice machines have water filtration. See Scotsman water filter specification sheet for details.